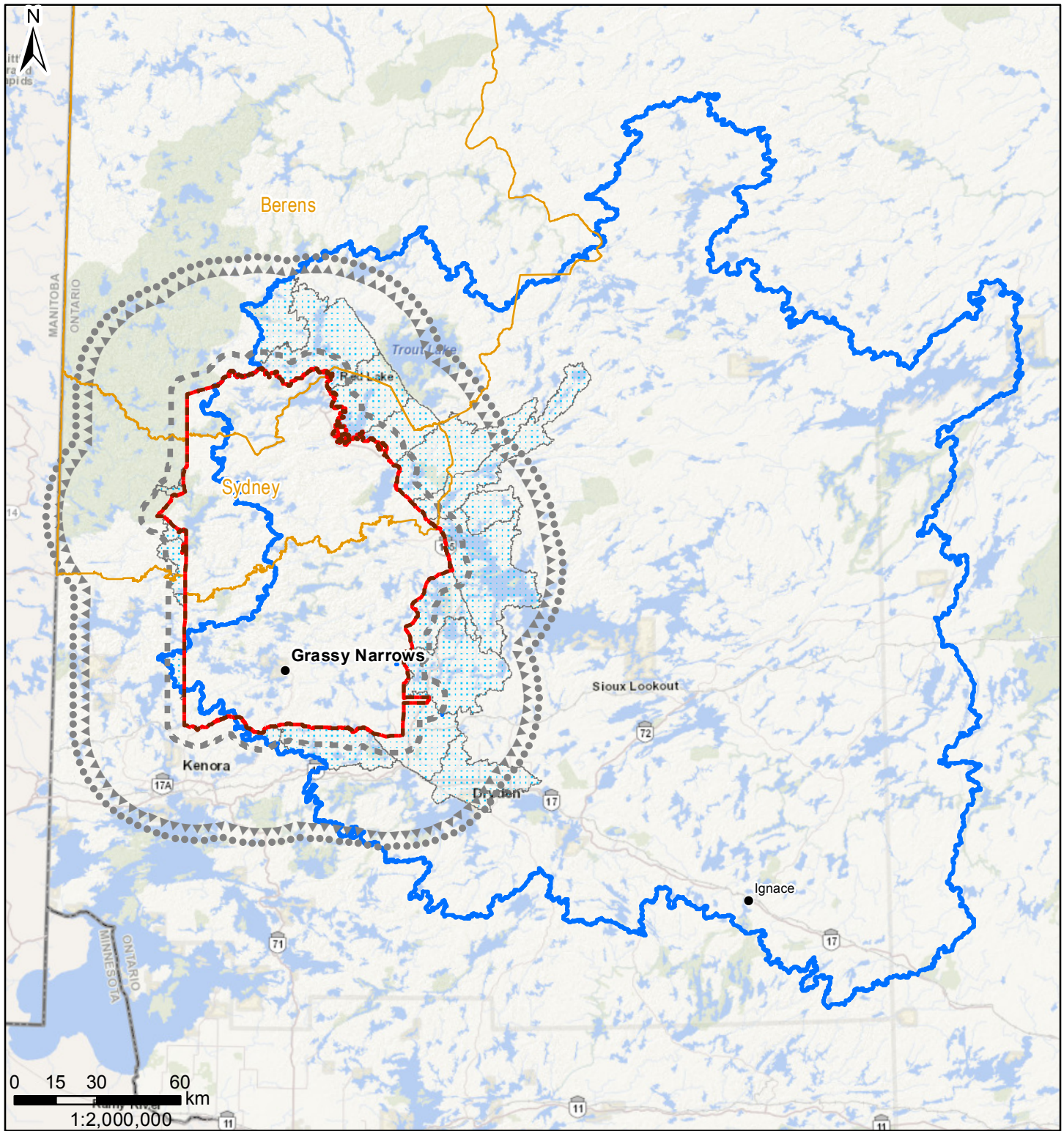


# Asubpeeschoseewagong (Grassy Narrows) Interim Core Area of Interest for Mining

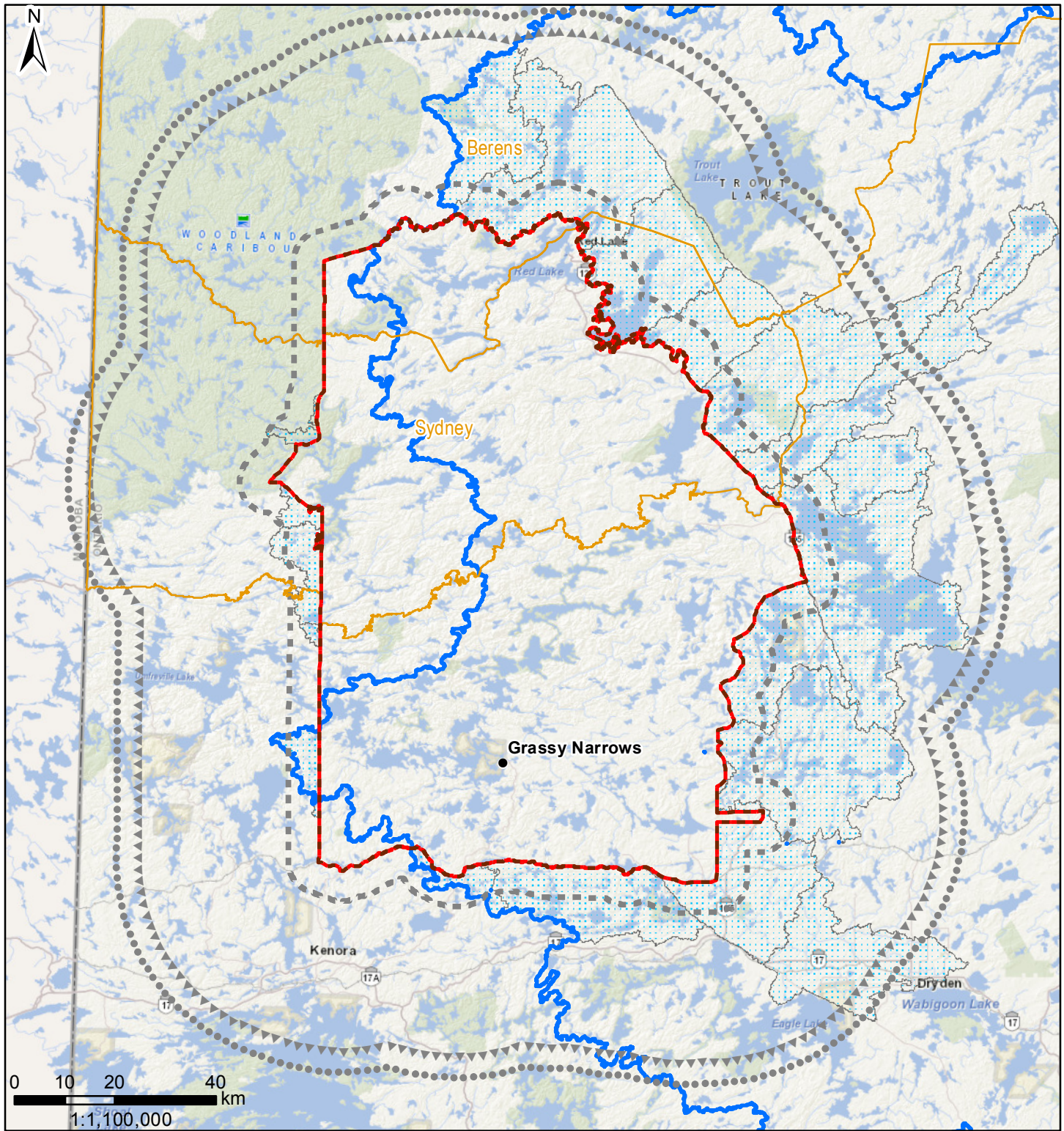


- Interim Core Area of Interest for Mining
- Moose Home Range (6km)
- Wolverine Home Range Area (36km)
- Walleye Migration Area (40km)
- Caribou Range Boundaries
- Nearby Quaternary Watersheds That Flow Into The Core
- English River Watershed at Separation Narrows

N.B. This is an interim product created under duress arising from the escalation of imposed mining activity by the Crown and industry and for the sole purpose of identifying an interim area for negotiations on mining related activity. It is not a complete representation of Grassy Narrows' area of interest. Due to unique circumstances and capacity constraints Grassy Narrows has not completed comprehensive studies required to fully determine its area of interest including, but not limited to, land use and occupancy, ethnohistory, archaeology, biology, and hydrology. For example, rights and interests associated with air quality, migratory birds, travel routes, marten, lake sturgeon, wolves, eastern cougar, landscape intactness, climate resilience, biodiversity, genetic diversity, and many other factors are not reflected here. Also, linear boundaries are an imposed non-Indigenous concept that does not accord with the nature of Grassy Narrows' relationship with the land which includes extensive interconnectedness, reciprocity, travel, sharing, and trade. This map does not limit any claims by Grassy Narrows people to assert their rights and interests throughout their territory and to protect themselves from harm to their health, rights, way of life, livelihood, society, and environment. Grassy Narrows people have Treaty rights, and practice them, throughout the Treaty 3 area. Grassy Narrows people also have inalienable inherent rights given by the Creator, some of which are affirmed in international law and instruments. The Grassy Narrows people are the true experts about their land, rights, and interests.



# Asubpeeschoseewagong (Grassy Narrows) Interim Core Area of Interest for Mining



- Interim Core Area of Interest for Mining
- Moose Home Range (6km)
- Wolverine Home Range Area (36km)
- Walleye Migration Area (40km)
- Caribou Range Boundaries
- Nearby Quaternary Watersheds That Flow Into The Core
- English River Watershed at Separation Narrows

N.B. This is an interim product created under duress arising from the escalation of imposed mining activity by the Crown and industry and for the sole purpose of identifying an interim area for negotiations on mining related activity. It is not a complete representation of Grassy Narrows' area of interest. Due to unique circumstances and capacity constraints Grassy Narrows has not completed comprehensive studies required to fully determine its area of interest including, but not limited to, land use and occupancy, ethnohistory, archaeology, biology, and hydrology. For example, rights and interests associated with air quality, migratory birds, travel routes, marten, lake sturgeon, wolves, eastern cougar, landscape intactness, climate resilience, biodiversity, genetic diversity, and many other factors are not reflected here. Also, linear boundaries are an imposed non-Indigenous concept that does not accord with the nature of Grassy Narrows' relationship with the land which includes extensive interconnectedness, reciprocity, travel, sharing, and trade. This map does not limit any claims by Grassy Narrows people to assert their rights and interests throughout their territory and to protect themselves from harm to their health, rights, way of life, livelihood, society, and environment. Grassy Narrows people have Treaty rights, and practice them, throughout the Treaty 3 area. Grassy Narrows people also have inalienable inherent rights given by the Creator, some of which are affirmed in international law and instruments. The Grassy Narrows people are the true experts about their land, rights, and interests.